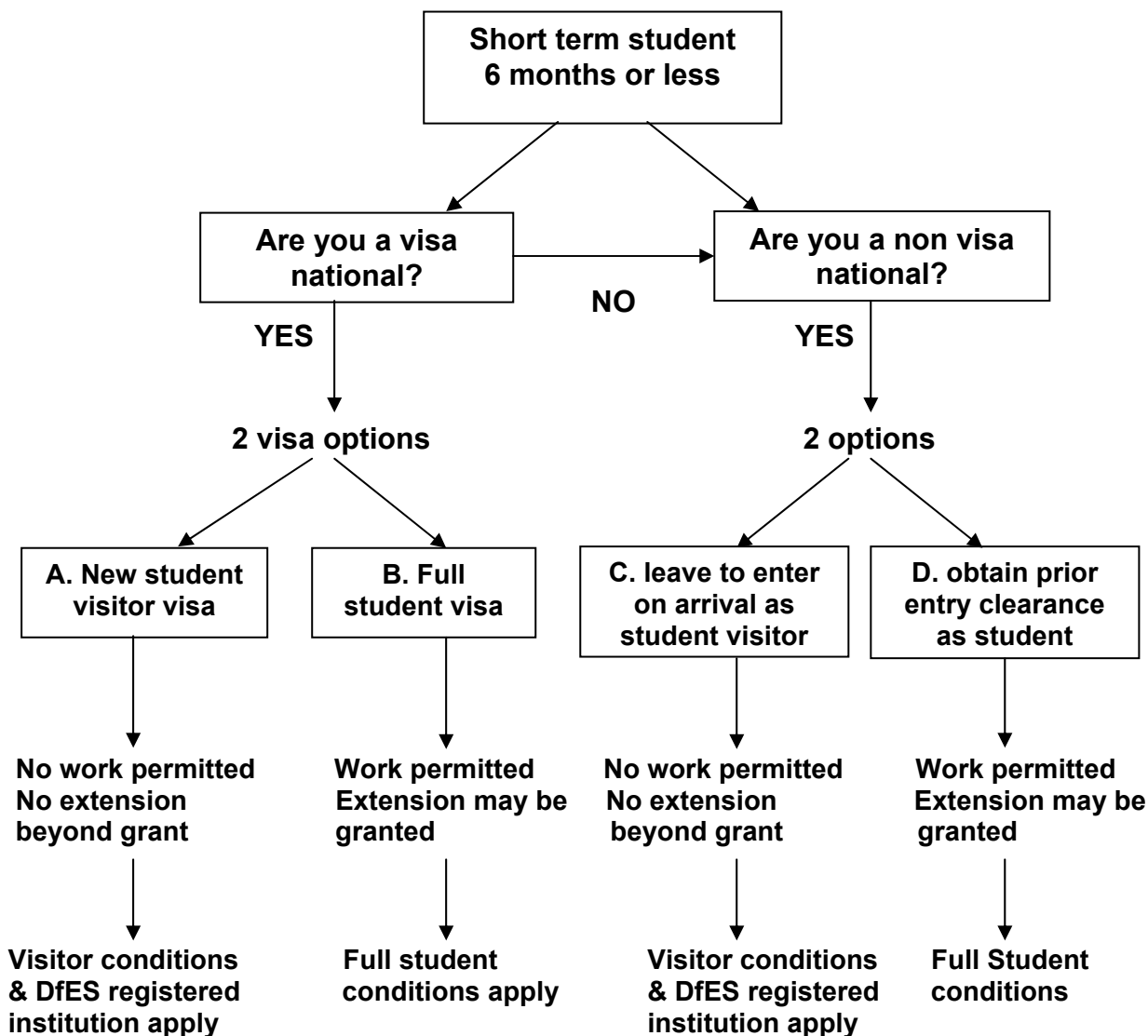


Student rules changes from 1 September 2007

A new entry clearance (visa) category of student visitor has been introduced for short term students who come to the United Kingdom to study on courses of six month duration or less.



About you

If you intend to take employment (i.e 20 hours per week part-time or full time in vacation periods or will be undertaking a work placement as part of a course of study) or if you wish to seek an extension of stay beyond your initial grant of leave, you **must** obtain a full student entry clearance at the nearest UK mission abroad.

If you are a visa national you need only apply for a student visitor visa.

If you are a non-visa national you may still qualify for leave to enter as a student visitor without these entitlements.